

ARTISCAN Beam QA

AQUILAB solutions to simplify all your Dose & Beam quality controls

Centralize and **Follow** all your measurements

Save time by using the EPID for daily QA

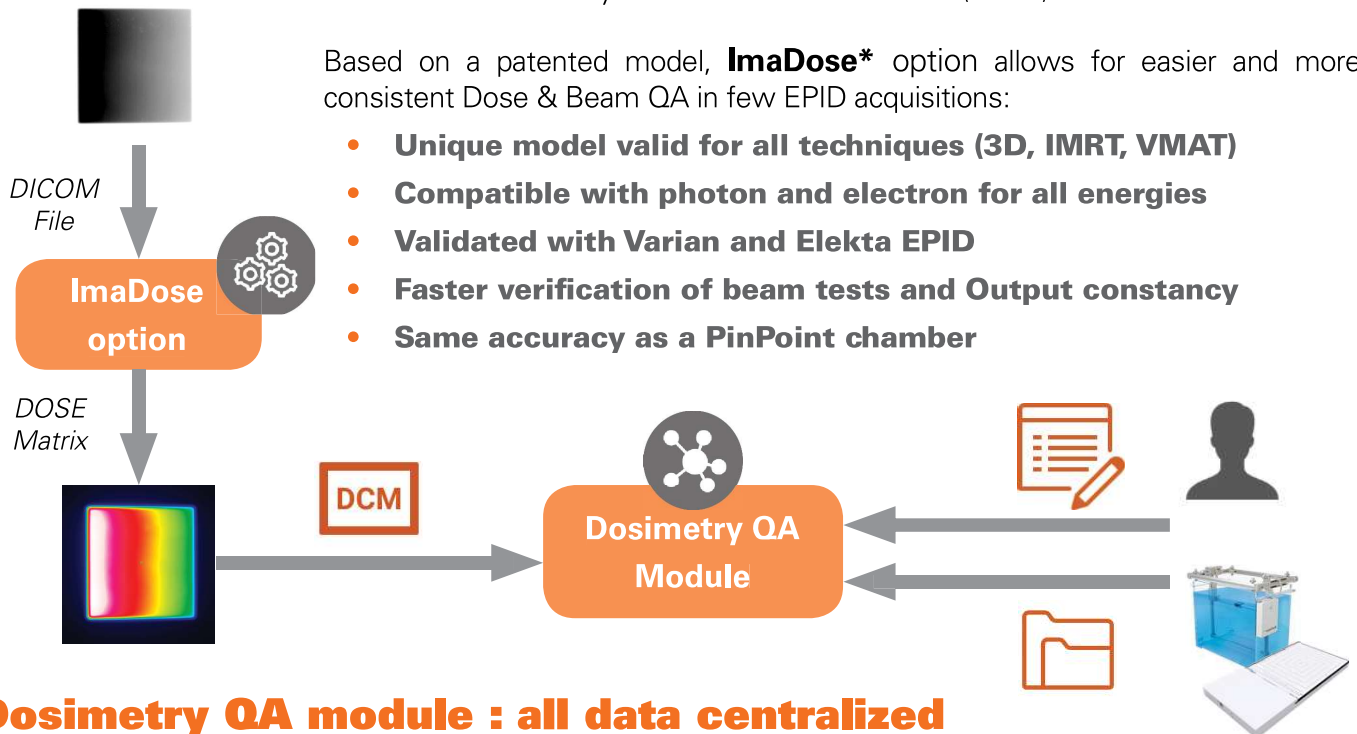


ImaDose : EPID-based Dose & Beam QA

The ARTISCAN **ImaDose*** option converts DICOM EPID images acquired in air into Dose matrices in your conditions of reference (water).

Based on a patented model, **ImaDose*** option allows for easier and more consistent Dose & Beam QA in few EPID acquisitions:

- **Unique model valid for all techniques (3D, IMRT, VMAT)**
- **Compatible with photon and electron for all energies**
- **Validated with Varian and Elekta EPID**
- **Faster verification of beam tests and Output constancy**
- **Same accuracy as a PinPoint chamber**

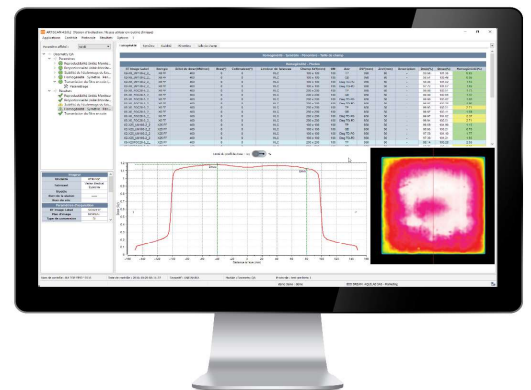


Dosimetry QA module : all data centralized

The ARTISCAN **Dosimetry QA** module allows for an efficient centralization of all measurements and beam parameters.

Compatible with **ImaDose matrices** and **ASCII files** generated by QA measurement devices from all main manufacturers, the **Dosimetry QA module** stores and analyzes data to quickly determine:

- **Flatness, Symmetry, Penumbra**
- **Wedge Filter Transmission**
- **Depth Performance**
- **Reproducibility, MU Proportionality**
- **Output Constancy**



* Pending CE mark



Compliant with IEC 60976, ANSM & DIN EN 60976 norms, **Dosimetry QA will facilitate the centralization of your quality controls** in a single solution, regardless of your equipment and procedures.

ARTISCAN™



Centralize
inventories and
controls



Automate
your analyses
Optimize
your equipment



Ensure
conformity to
laws &
recommendations

A solution for all Organisations

The modular design of the solution allows to adapt ARTISCAN to your equipment platform.

Solo, Concerto & Orchestra systems bring **tailored-to-your-needs** solutions **adapted to your budget**

Solo	Concerto	Orchestra
<p>One department One type of device One Access</p> 	<p>Unlimited departments Unlimited type of devices Unlimited Accesses</p> 	<p>Unlimited departments Unlimited type of devices Unlimited Accesses + User-defined tests & controls</p> 
<p>All in One solution for a Single Department</p>	<p>Complete solution for Global QA Management</p>	<p>Flexible solution for Personalized Advanced QA</p>

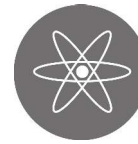
A solution for all Modalities



Radiology

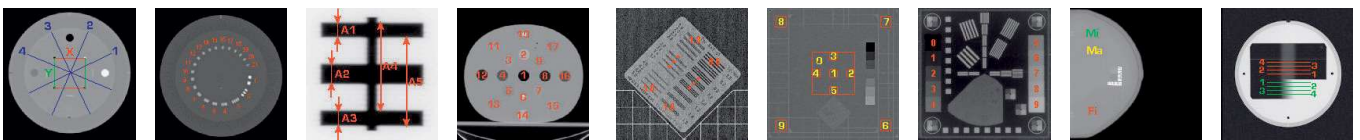


Radiotherapy



Nuclear Medicine

Automated analysis of all test objects and phantoms



You are not alone !

AQUILAB helps customers implementing its solutions on site or remotely.

Do not hesitate to contact us to share your projects and let us guide you towards the most adapted solution.

ARTISCAN is a CE marked medical device. This ensure you the compliance of the product to regulatory requirements for safety and performance for the interest of your patient.

AQUILAB sets customer satisfaction as a key policy. AQUILAB is certified according to the highest standards of quality management for the development of medical devices (ISO 13485:2012).

Parc Eurasanté Lille Métropole
250, rue Salvador Allende - 59120 Loos - France
Tél. +33 (0)3 69 61 51 51 - Fax. +33 (0)3 69 61 51 50
info@aquilab.com - www.aquilab.com

