

PLANET[®] Dose

Patient-specific Dosimetry

Molecular RadioTherapy Dosimetry

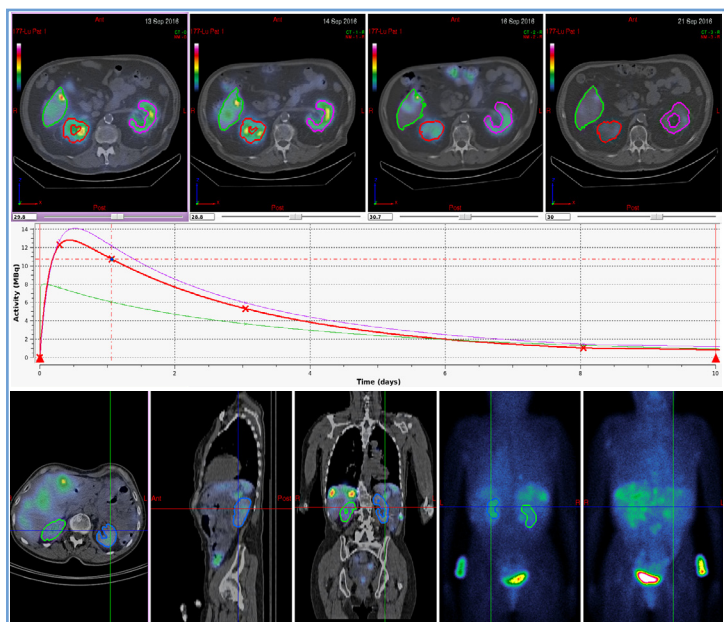
DOSIsoft invites you to discover the adaptation of PLANET[®] Dose to ¹⁷⁷Lutetium & ¹³¹Iodine dosimetry for Molecular RT*

Dedicated to patient-specific dosimetry, PLANET[®] Dose is a vendor-neutral and versatile software solution for Molecular RadioTherapy (MRT). Already available for SIRT ⁹⁰Y-microsphere, PLANET[®] Dose extends its capabilities to support ¹⁷⁷Lu & ¹³¹I-based therapies by offering fully integrated 3D and hybrid 3D-2D personalized dosimetry workflows.

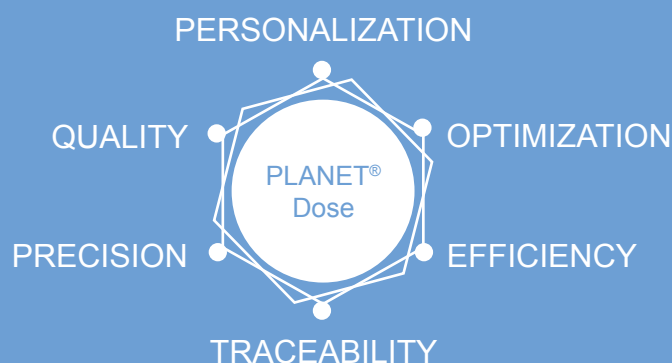
This new adaptation allows the medical team to tailor patient therapy through multi-time points management, rigid or elastic registration, automatic VOI propagation, calculation of residence time and voxel-based dose computation. The medical team can also benefit from the PLANET[®] oncology features: anatomical/functional segmentation, advanced quantification, texture analysis and therapy response assessment.

Discover PLANET[®] Dose for ¹⁷⁷Lu & ¹³¹I-based therapies

3D / hybrid 3D-2D personalized dosimetry



Key capabilities



PLANET[®] Dose is developed by DOSIsoft SA in France, FDA cleared and CE marked. Technical data is subject to change without notice.

The product or certain features may or may not be available for clinical use in any particular country. Please contact your local representative for more information.

* Ongoing clinical validation, not for clinical use.

PLANET MRT BR 20210811

PLANET[®] by DOSIsoft